



**The International Convention and
Exhibition Centre Commemorating His
Majesty's 7th Cycle Birthday Anniversary
(CMECC)**

OVERVIEW OF THE CONVENTION AND EXHIBITION



The International Convention and Exhibition Centre Commemorating His Majesty's 7th Cycle Birthday Anniversary (also known as Chiang Mai International Exhibition and Convention Centre or CMECC) is one of the largest convention and exhibition center in Southeast Asia. With usable space of 60,000 square meters, the centre is perfectly prepared for all type of events at both national and international levels. The Convention and Exhibition Centre is composed of two main buildings, SMEs building and main exhibition and convention hall. The main exhibition and convention hall is a large 2-story building with three main services including exhibition halls, convention halls and meeting rooms. 3 interconnected exhibition halls with a combined column free space of 8,000 square meters can accommodate more than 10,000 people. CMECC provides a large convention hall with 1,700 square meters, 29 various modern designed meeting rooms and other supporting facilities. Chiang Mai and its Lanna history are also well represented through the beautiful Thai-Lanna style arts and architectures within the premises. Parking for over 3,000 vehicles is available to visitors around the area which can be put to other uses. CMECC is a 10 minute drive from the city and 15 minute drive to Chiang Mai International Airport. It is surrounded by 2-5 star hotels, shopping malls and restaurants.

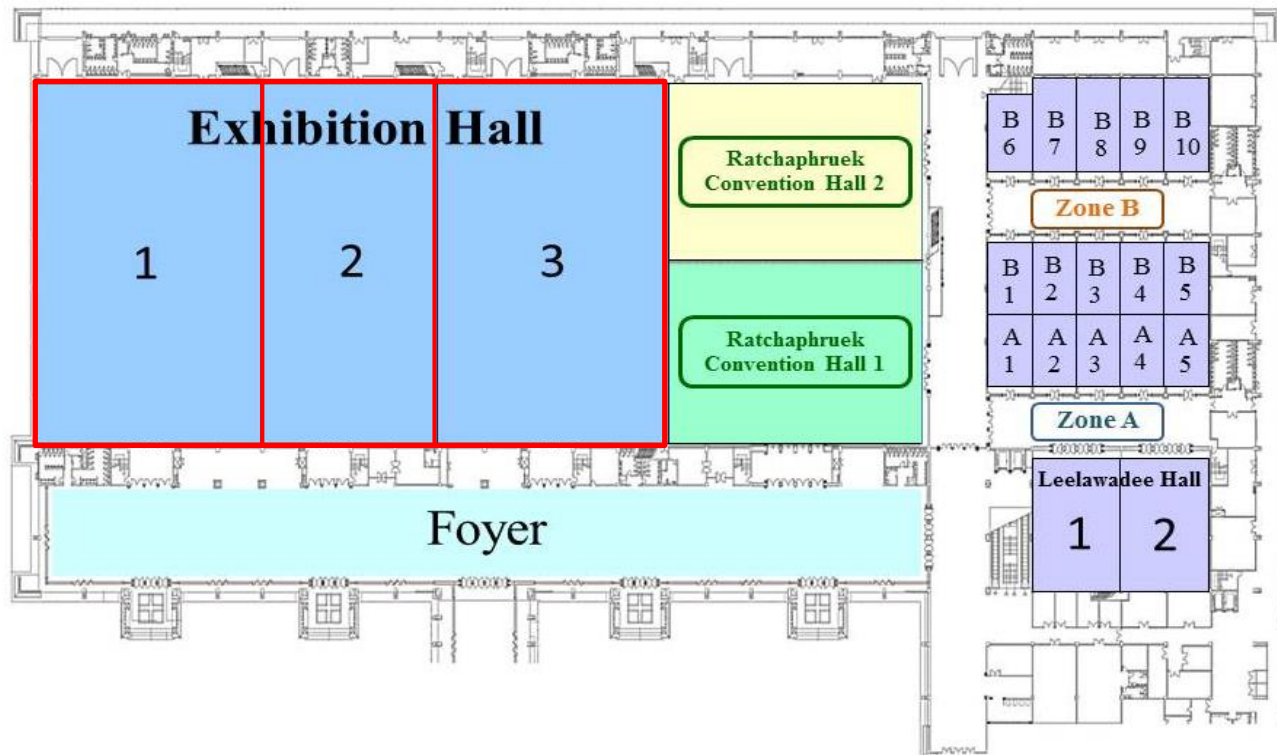
SMEs building is subjected to promote Thailand's entrepreneurship stimulus program, known as OTOP. It provides usable areas with 11,988 sqm which are composed of temporary exhibition hall, product display hall and supporting areas such as business meeting rooms, seminar rooms and rental office.

The 7,443 square meters multi-use outdoor space is designed to accommodate the need of all type of outdoor events and activities.

THE CONVENTION AND EXHIBITION CENTER



THE EXHIBITION HALL (HALL 1, 2 and 3)



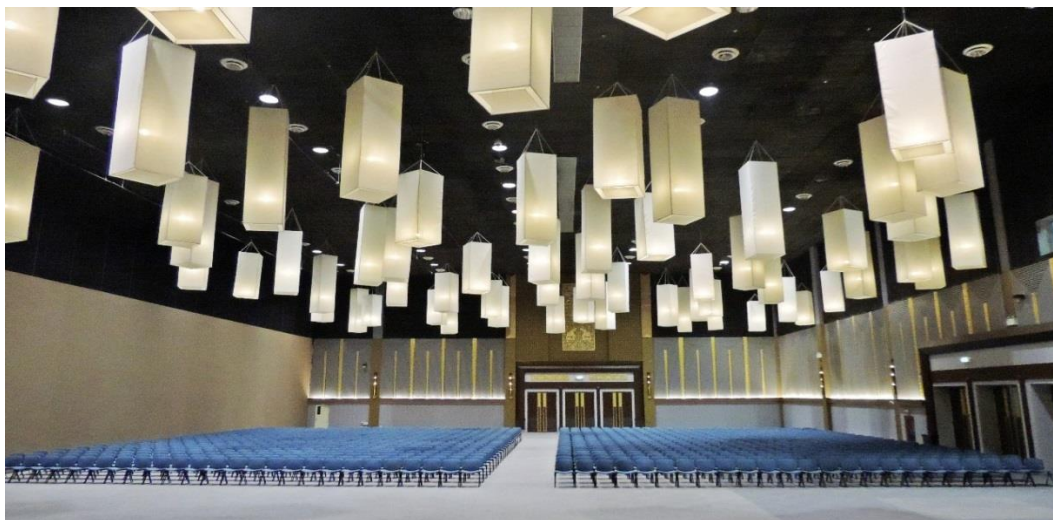
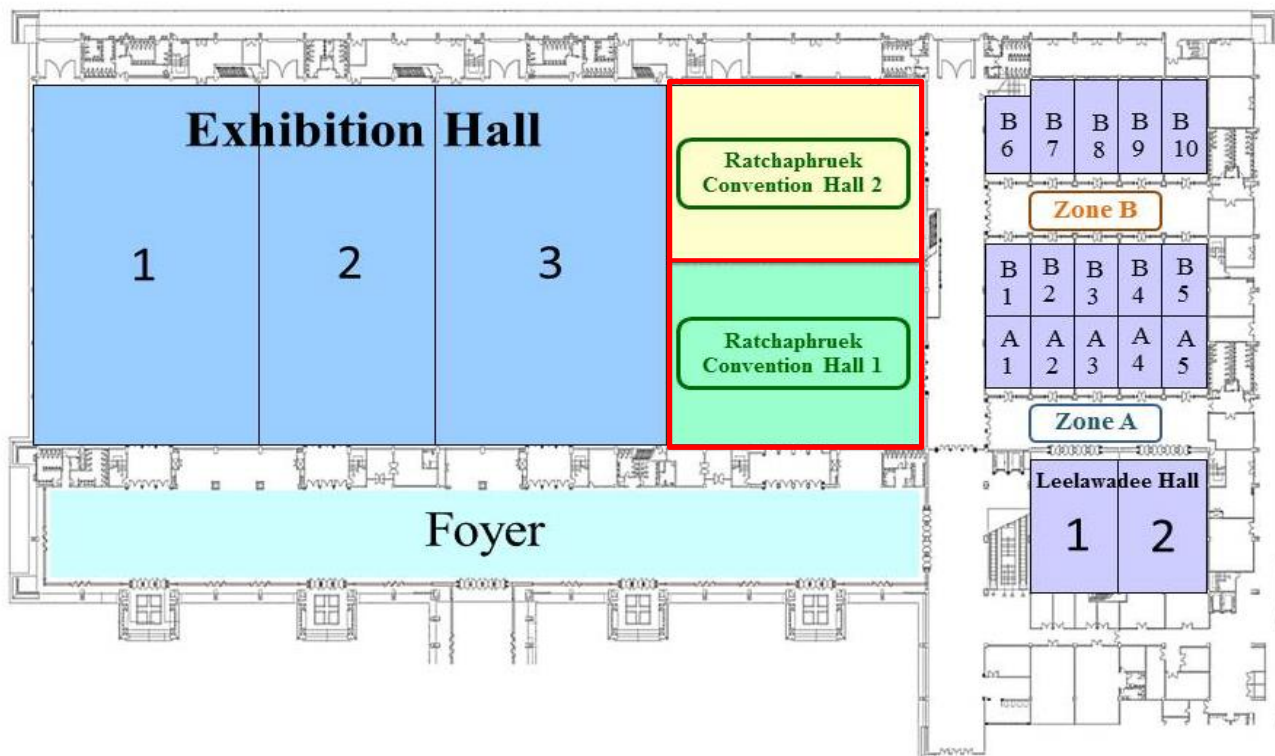
GENERAL SPECIFICATION OF EACH HALL

Area	Hall 1 and 3	2,835 sqm. each
	Hall 2	2,268 sqm.
	Ground level, column-free space	
Ceiling Height	12 m	
Flooring	Sealed concrete	
Hall	Connectivity 3 opening between each hall	
Toilets	1 male 1 female and 1 physically challenged in each hall	

Exhibition Hall 1-3	Dimension				Capacity					
	Area (m ²)	Length (m)	Width (m)	Height (m)	Theater	Classroom	U-Shape	Banquet	Cocktail	Booth
	7,938	63	126	12	7,900	4,700	-	5,500	8,000	430
Exhibition Hall 1	2,835	63	45	12	2,800	1,700	-	2,000	2,900	150
Exhibition Hall 2	2,268	63	36	12	2,200	1,300	-	1,500	2,300	120
Exhibition Hall 3	2,835	63	45	12	2,800	1,700	-	2,000	2,900	150
Exhibition Hall 1+2 , 2+3	5,103	63	81	12	5,000	3,000		3500	5200	270

****These Fact sheets are an approximation of room capacity and are intended as a guide only.
Some space will need to be subtracted to accommodate staging and audio-visual requirement

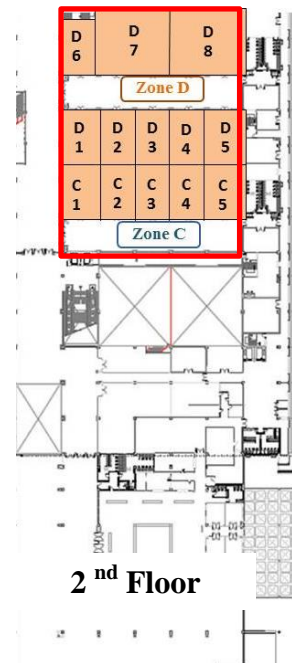
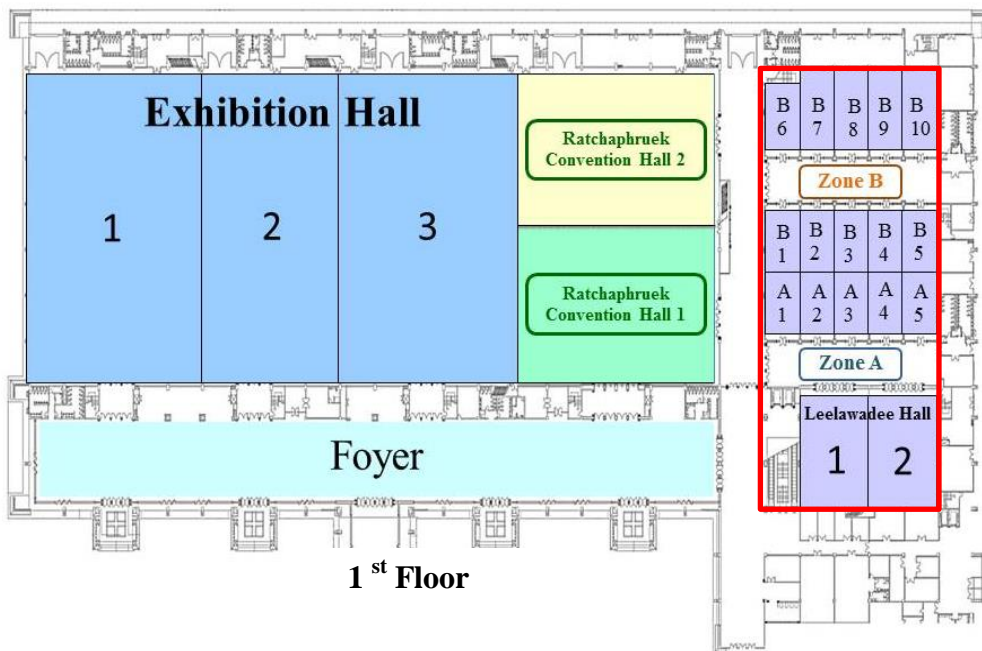
THE CONVENTION HALL



Convention Hall	Dimension				Capacity					
	Area (m ²)	Length (m)	Width (m)	Height (m)	Theater	Classroom	U-Shape	Banquet	Cocktail	Booth
	3,402	63	54	12	3,400	2,050	-	2,400	3,500	180
Ratchaphruek Convention Hall 1	1,701	54	31.5	12	1,700	700	500	1,200	1,800	90
Ratchaphruek Convention Hall 2	1,701	54	31.5	12	1,700	700	500	1,200	1,800	90

****These Fact sheets are an approximation of room capacity and are intended as a guide only.
Some space will need to be subtracted to accommodate staging and audio-visual requirements.

THE MEETING ROOMS



Function Room	Dimension				Capacity				
	Area (m ²)	Length (m)	Width (m)	Height (m)	Theater	Classroom	U-Shape	Banquet	Cocktail
1. Leelawadee	864	24	36	11	800	400	250	600	1000
Leelawadee 1	432	24	18	11	300	150	120	300	500
Leelawadee 2	432	24	18	11	300	150	120	300	500
2. Pra-yorm (A1)	117	13	9	4	100	50	30	-	-
3. Fai-kum (A2)	117	13	9	4	100	50	30	-	-
4. Bua-tong (A3)	117	13	9	4	100	50	30	-	-
5. Kasalong (A4)	117	13	9	4	100	50	30	-	-
6. Thong-Kwaew (A5)	117	13	9	4	100	50	30	-	-
7. Rose-soo-Khon (B1)	117	13	9	4	100	50	30	-	-
8. Ben-ja-mas (B2)	117	13	9	4	100	50	30	-	-
9. Sarapee (B3)	117	13	9	4	100	50	30	-	-
10. Kra-dang-nga (B4)	117	13	9	4	100	50	30	-	-
11. Inthanin (B5)	117	13	9	4	100	50	30	-	-
12. Bua-luang (B6)	120	13.3	9	4	100	50	30	-	-
13. Chong-kol (B7)	157	17.5	9	4	150	80	45	-	-
14. Nonsea (B8)	157	17.5	9	4	150	80	45	-	-
15. Khare-saed (B9)	157	17.5	9	4	150	80	45	-	-
16. Chuan-chom (B10)	157	17.5	9	4	150	80	45	-	-

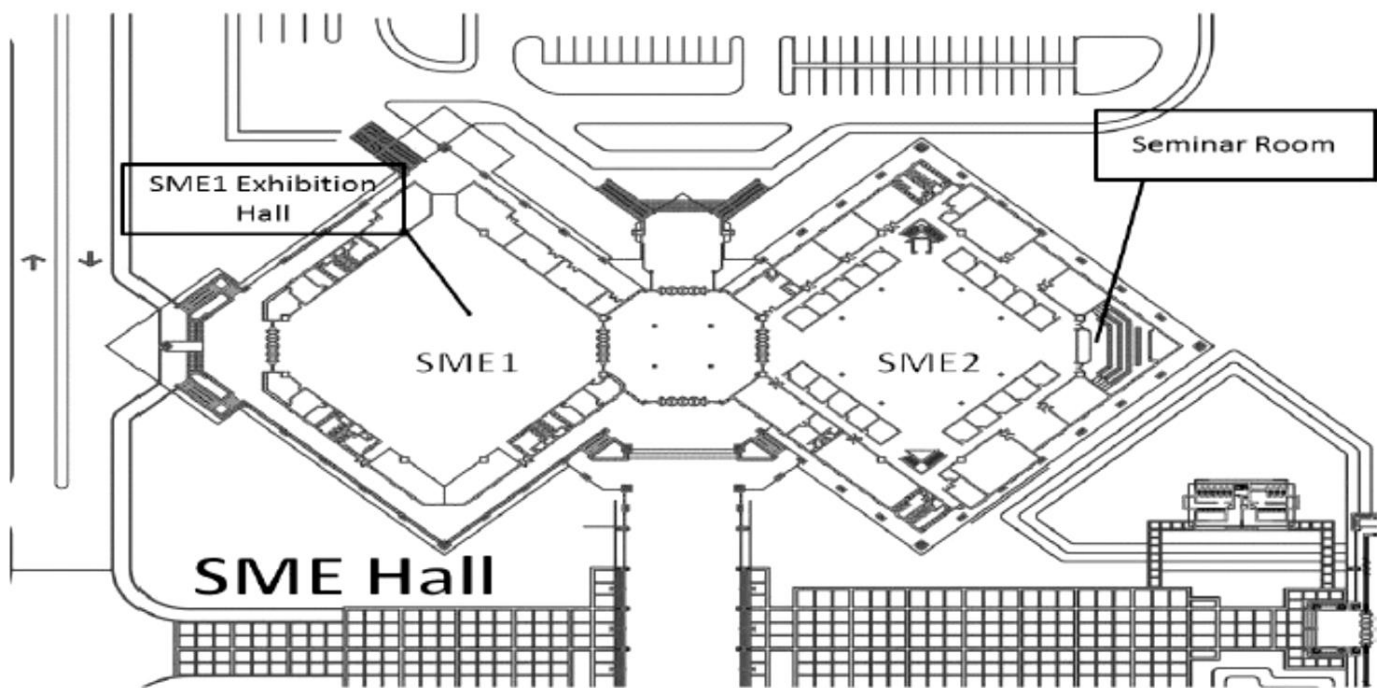
Function Room	Dimension				Capacity				
	Area (m ²)	Length (m)	Width (m)	Height (m)	Theater	Classroom	U-Shape	Banquet	Cocktail
17. Pong-saed (C1)	118	13.5	9	3.6	110	60	30	-	-
18. Doa-reung (C2)	118	13	9	3.6	100	60	30	-	-
19. Fueang-fa (C3)	118	13	9	3.6	100	60	30	-	-
20. Chaba (C4)	118	13	9	3.6	100	60	30	-	-
21. Mali (C5)	118	13	9	3.6	100	60	30	-	-
22. Ang-krab (D1)	118	13	9	3.6	110	60	30	-	-
23. Rak-re (D2)	118	13	9	3.6	100	60	30	-	-
24. Poodsorn (D3)	118	13	9	3.6	100	60	30	-	-
25. Arn-chan (D4)	118	13	9	3.6	100	60	30	-	-
26. Kran-krao (D5)	118	13	9	3.6	100	60	30	-	-
27. Thantawan (D6)	116	13	9	3.6	100	60	30	-	-
28. Auang-laung (D7)	312	17.6	17.6	3.6	300	180	90	-	-
29. Kularb (D8)	312	17.6	17.6	3.6	300	180	90	-	-

****These Fact sheets are an approximation of room capacity and are intended as a guide only. Some space will need to be subtracted to accommodate staging and audio-visual requirements.

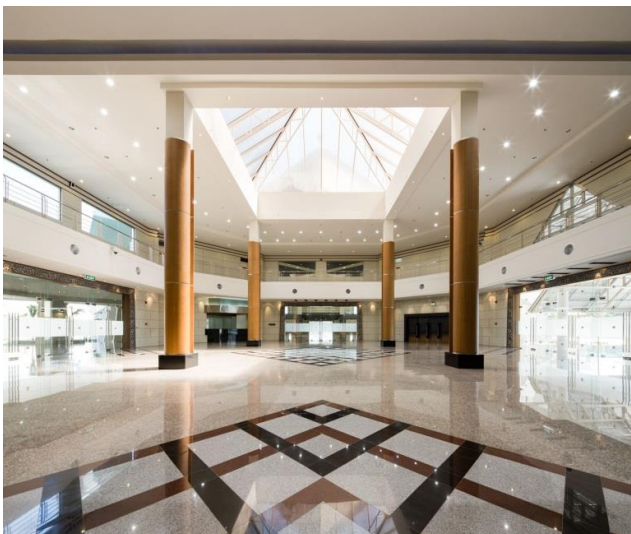


Northern SMEs Development and Distribution Centre (SMEs Building)

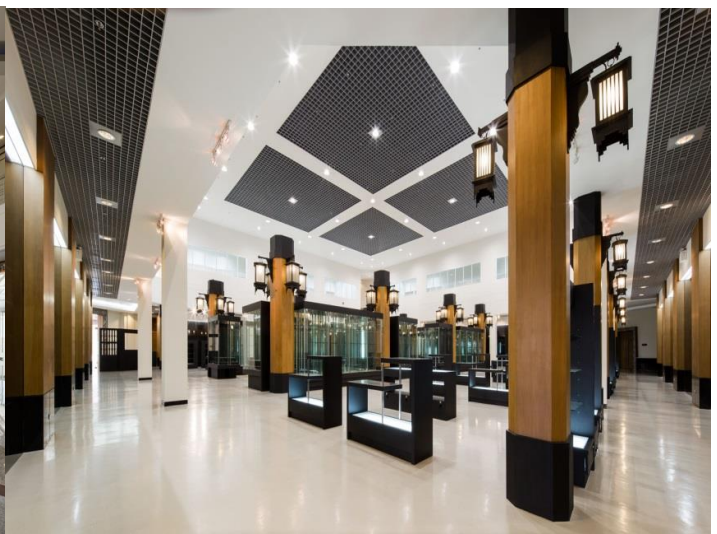




SME Hall	Dimension				Capacity					
	Area (m ²)	Length (m)	Width (m)	Height (m)	Theater	Classroom	U-Shape	Banquet	Cocktail	Booth
SME 1 Exhibition Hall	1,980	45	45	9	1,900	1,150	-	1,300	2,100	100
Training room 1	101	12	9	4	90	50	25	-	-	-
Training room 2	101	12	9	4	90	50	25	-	-	-
Training room 3	63	9	7	4	50	30	15	-	-	-
Training room 4	63	9	7	4	50	30	15	-	-	-
Business Room 1-20 (Per Room)	16	4	4	4	-	-	-	-	-	-
Seminar room	260	12	23	4	80	-	-	-	-	-



Temporary Exhibition Hall

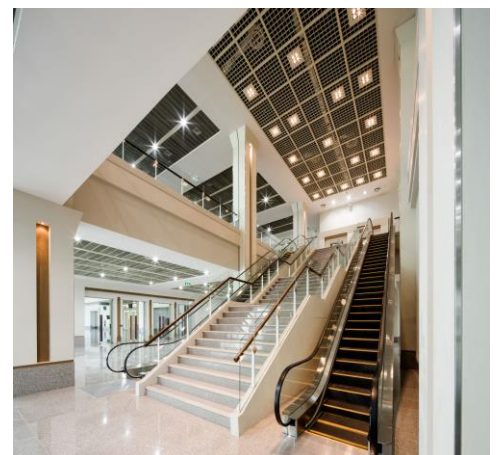


Product Display Hall

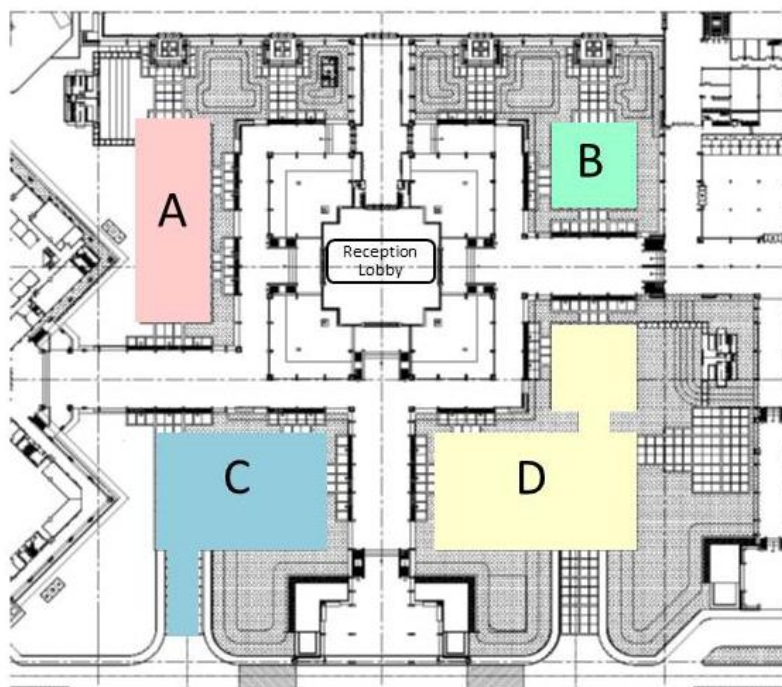
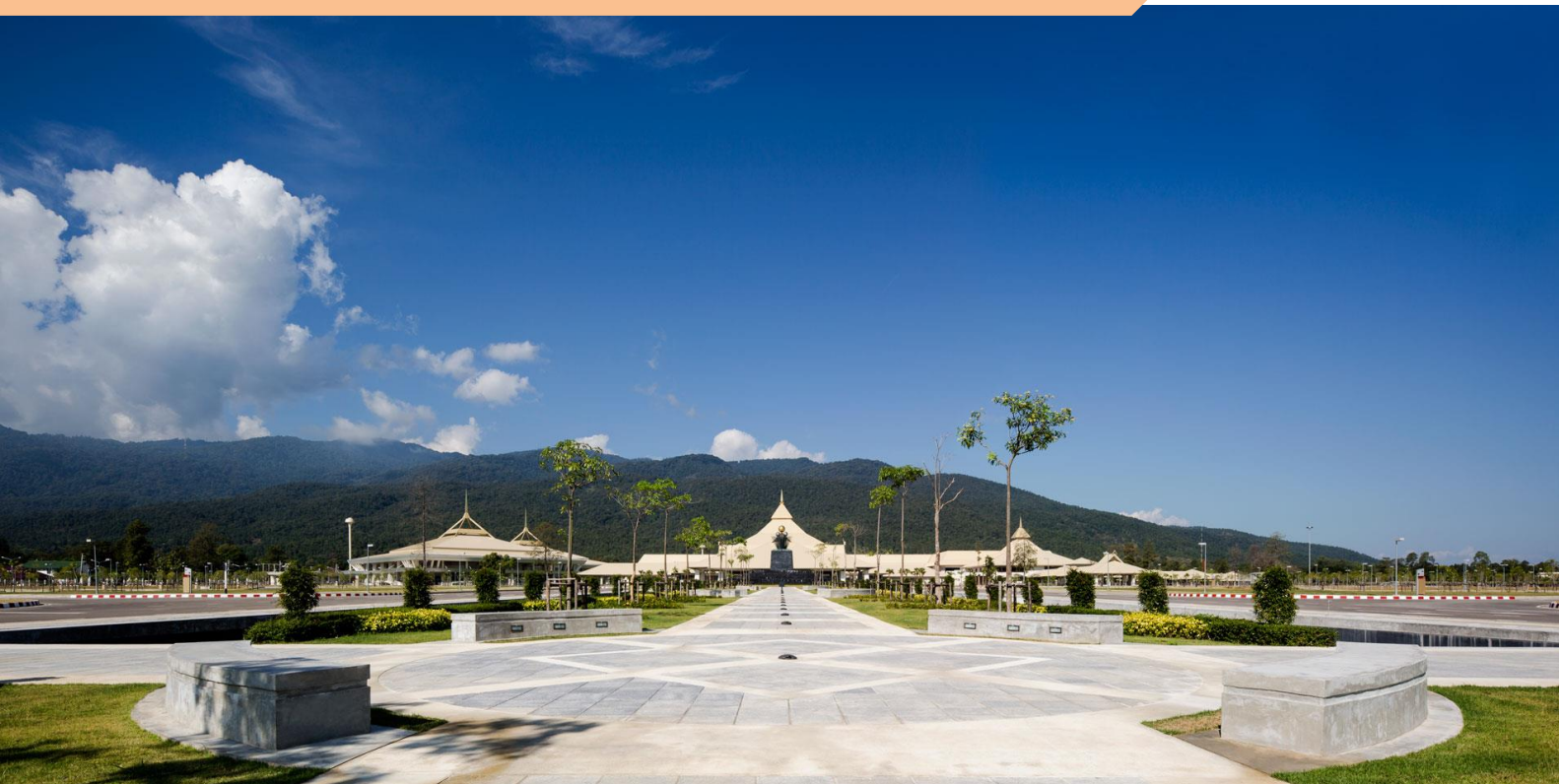
Supporting Facilities



- **Organizer Offices**
- **Press Centers**
- **Seminar Rooms**
- **Prayer Rooms**
- **High-Speed Wireless Internet**
- **Restaurants and Food Court**
- **V.I.P Rooms**
- **Business Meeting Rooms**



Outdoor Exhibition Area



Outdoor Space	Dimension	Capacity					
	Area (m²)	Theater	Classroom	U-Shape	Banquet	Cocktail	Booth
Total Area	7,443	-	-	-	-	-	400
Zone A	1,472	-	-	-	800	1,500	75
Zone B	784	-	-	-	450	800	40
Zone C	2,035	-	-	-	1,200	2,100	90
Zone D	3,152	-	-	-	1,800	3,200	150



Facilities and Terms of Service.

1. Common areas cleaning services (except for exhibition booth area).
2. Common areas securities (except for exhibition booth area).
3. Turning lights 50% on when installation or razing date (except occupied areas).
4. 100% (hundred percent) electricity on, 10 hours/day (operation date)
5. Parking area
6. Telephone cord (free installation, internet wire and telephone charge are not inclusive)\
7. First aid room (no service inclusive)
8. Business center
9. Full day rental 08:00 – 17:00
10. Half day rental 08:00 – 12:00, 13:00 – 17:00

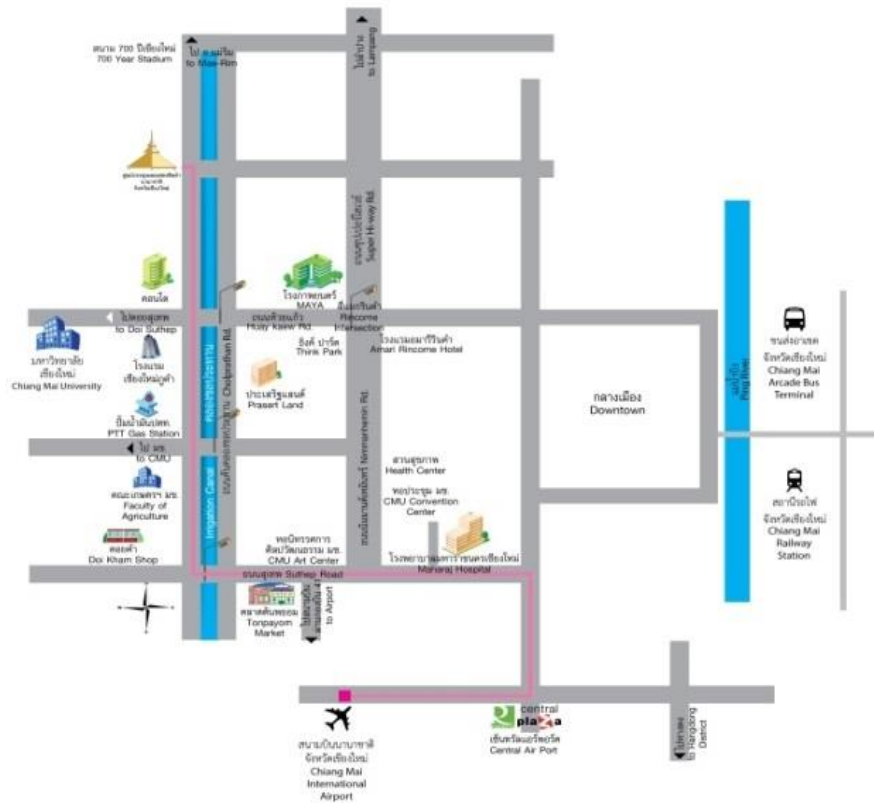
Not Included.

1. Exhibition booth's construction and tools of the exhibition.
2. Exhibition booth's electronic devices and lightings.
3. Insurance.
4. Entertaining equipment.
5. Transportations.

Meeting room's preparations.

1. Registrations table with flower.
2. Meeting room setting.
3. Standard stage.
4. Podium, microphone and flowers.
5. Basic sound system.
6. Projector and screen.
7. Logo and wordings for stage's set

Location



Contact Us

456 Moo 1 Chang Puak Mueang Chiang Mai
Thailand 50300

Tel: +66 (0) 53 010 572-3

Fax: +66 (0) 53 010 571

Website: www.cmecc-mice.com